

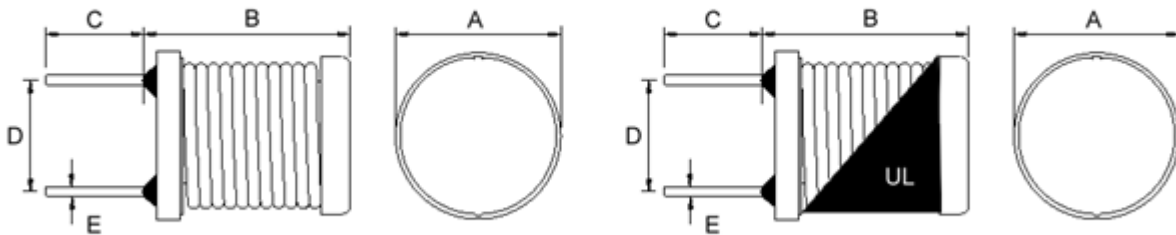
## DIP Assembled Inductor



**Feature:**

Small size radial lead type. ( 20mA to 6.0 Amps ).  
 Small mounting space required.  
 Special lead wire construction prevents open Circuit.  
 Covered with PVC sleeve or UL shrink tubing or non-tube.  
 According to customer's requirement change dimension and core material.

Dimension : mm



Type	A	B	C	D	E
HDR5X7	7.0MAX	9.5MAX	10.0MIN	3.0REF	0.65±0.1
HDR6X8	8.0MAX	11.0MAX	10.0MIN	3.6REF	0.65±0.1
HDR8X7	10.5MAX	9.5MAX	10.0MIN	5.6REF	0.65±0.1
HDR8X10	10.5MAX	13.0MAX	10.0MIN	5.6REF	0.65±0.1
HDR9X12	11.5MAX	13.0MAX	10.0MIN	5.8REF	0.8±0.1
HDR10X10	13.0MAX	13.0MAX	10.0MIN	5.0REF	0.75±0.1
HDR10X12	13.0MAX	14.5MAX	10.0MIN	6.5REF	0.8±0.1
HDR10X16	13.0MAX	18.0MAX	10.0MIN	6.5REF	0.8±0.1
HDR14X15	17.5MAX	18.0MAX	10.0MIN	7.5REF	0.8±0.1

## HRO Series



### Feature:

The R Series use ferrite cores and offer a wide range of inductance values. Their compact size and pretinned leads make them easy to use in printed circuit boards. Covered with PVC sleeve or UL shrink tubing or non-tube. According to customer's requirement change Dimension and core material.

Dimension : mm

Fig.1

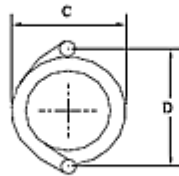
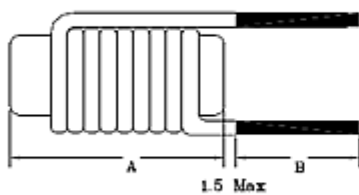
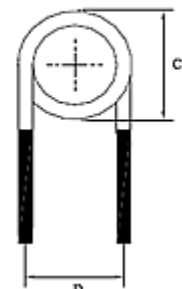
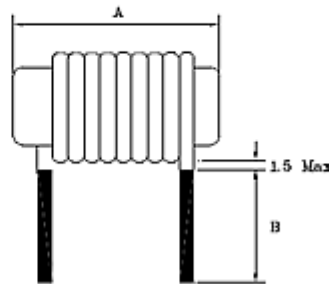


Fig.2



Type	A (Max)	B (Max)	C (Max)	D (Ref)	
				Fig.1	Fig2
HRO0310	11.0	15.0	5.0	5.0	7.5
HRO0415	16.0	15.0	5.5	6.0	12.5
HR00520	21.0	15.0	7.0	8.0	15.0
HRO0630	31.0	15.0	9.5	10.0	25.0

Design as coustome's requested specifications ( 可依客戶特殊需求設計 )