

## 1000BASE-T SMD TRANSFORMERS MODEL NO:HA2412SG

### Feature:

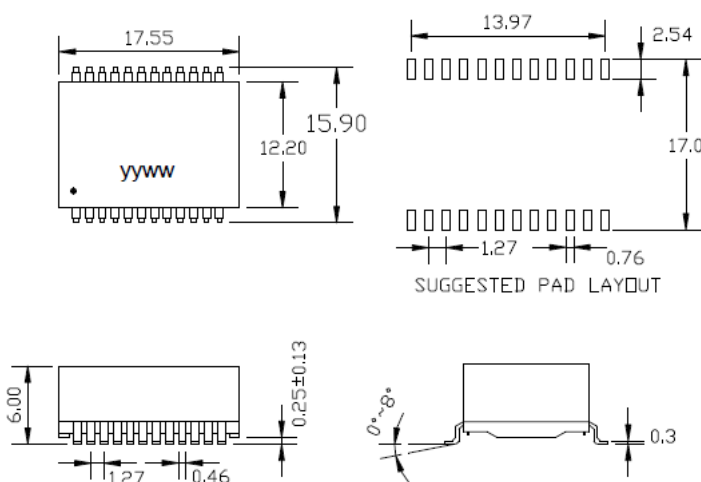


Designed for long haul Gigabit Ethernet 1000Base-T, full duplex applications  
 Meets all IEEE802.3at requirement Supports 4 pairs of category 5 UTP cable  
 SMD Environmental: Designed to meet IR 235°C 1 minute Suitable for End-span POE applications with 720 mA current capability.  
 Comply with ROHS&Halogen free requirements. Storage Temperature rang:-25°C To +125°C HI-POT:1500VAC 1mA 1Sec

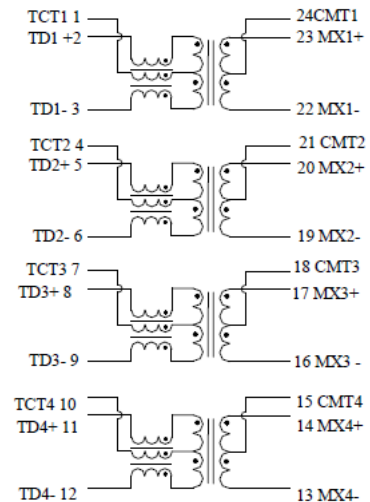
### Electrical Specifications at 25°C – Operating Temperature: 0°C To +70°C

Part Number	Transformer Turns ratio ( $\pm 5\%$ ) Receive Transmit	Insertion Loss (dB TYP) 1~100MHz	Crosstalk (dB TYP) 0.3~30/60~100(MHz)	Return loss (dB TYP) 0.3~30/40/50~80(MHz)	DCMR (dB TYP) 30/60/100 (MHz)
HA2412SG	1:1 1CT:1CT	-1.2	-35/-30	-16/ -13.5/ -10	-40/-35/-30

### Dimension : mm



### Schematics :



Data sheet subject to change without notice Unless otherwise specified, all tolerance are  $\pm 0.25\text{mm}$